



ACCESS TO N-13 AMMONIA

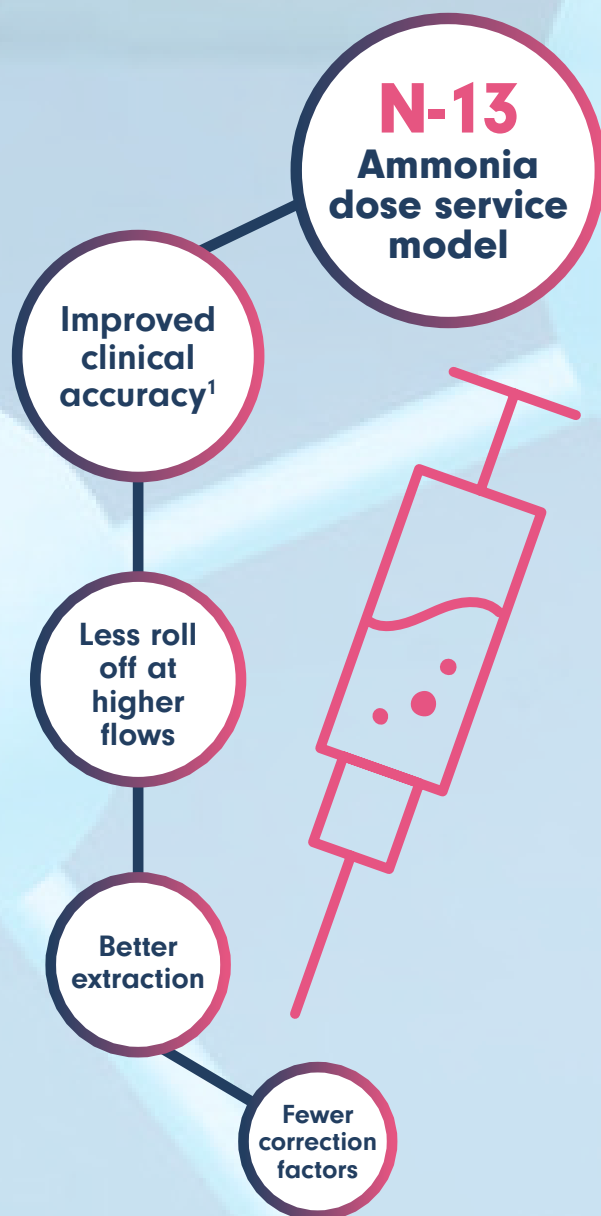
Providing physicians and patients access to excellence for myocardial perfusion in cardiac PET imaging

SUPERIOR IMAGING WITHOUT THE COST OF A CYCLOTRON

Used by a growing number of academic institutions, N-13 Ammonia is rapidly changing the standard of excellence for myocardial perfusion in cardiac PET imaging.

We combine expertise, experience, and a cutting-edge infrastructure solution to bring N-13 Ammonia into your practice without the cost of a cyclotron.

Our innovative dose service model eliminates the up-front expense and provides the support needed to launch a successful cardiac PET program, while helping to establish a brand-differentiating service that keeps patients close and drives referrals.



1. <https://pubmed.ncbi.nlm.nih.gov/22776752/>

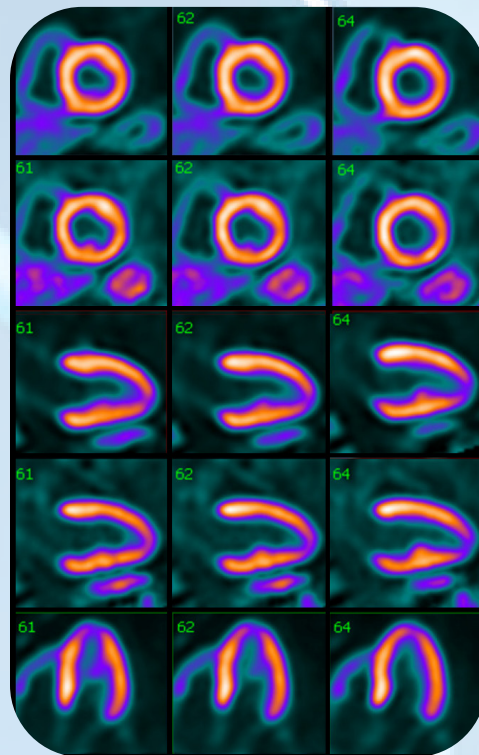
CARDIAC PET OFFERS QUALITY IMAGING AND DIAGNOSTIC POTENTIAL

N-13 Ammonia paves the way to better diagnostics with a low positron range, excellent extraction and retention, high sensitivity and overall accuracy for detecting CAD.¹

N-13 Ammonia consistently produces high-quality diagnostic studies regardless of patient size or gender.¹ Whether you perform pharmacologic stress with MBF or treadmill stress,² N-13 Ammonia provides better risk classification and overall patient management.³

Now is the time to establish a brand-differentiating and reimbursable cardiac PET program that keeps patients close and drives referrals.

Contact us today to get started.



1. <https://pubmed.ncbi.nlm.nih.gov/22776752/>

2. [http://doi.org/10.1016/s0828-282x\(09\)70505-7](http://doi.org/10.1016/s0828-282x(09)70505-7)

3. <http://doi.org/10.1161/CIRCULATIONAHA.111.050427>



IONETIX is a leading molecular imaging diagnostics and therapeutics company focused on providing physicians and patients access to N-13 Ammonia.

Contact us:

3130 Sovereign Drive, Lansing, MI 48911
517.252.4069 ext 808
N-13Ammonia@IONETIX.com

For more information, visit **IONETIX.com**

The information in this brochure is not intended as medical advice. Responsibility for patient care resides with the healthcare professional on the basis of his or her professional license, experience and knowledge of the patient.

For full Prescribing Information including indications, contraindications, warnings, precautions and adverse events, please go to:

<https://dailymed.nlm.nih.gov/dailymed/fda/fdaDrugXsl.cfm>